

NEW CONCEPT INFRASTRUCTURE WEST AFRICA LIMITED

BUILDING AND CIVIL ENGINEERING CONSTRUCTION



| COMPANY
| PROFILE |



NEW CONCEPT INFRASTRUCTURE WEST AFRICA LIMITED

BUILDING AND CIVIL ENGINEERING CONSTRUCTION





INDEX

INTRODUCTION/COMPANY IN BRIEF

OUR VISION, AIM, MISSION & CORE VALUES

SWORN AFFIDAVITE

CERTIFICATES

ORGANISATIONAL STRUCTURE

LIST OF PERSONNEL

LIST AND PICTURES OF EQUIPMENT

PROJECTS

CONTACT DETAILS



INTRODUCTION

It is with great pleasure we introduce our firm Messrs **NEW CONCEPT INFRASTRUCTURE WEST AFRICA LIMITED** a frontline Construction company incorporated and registered with the corporate affairs commission on the 17th April, 2013 to operate in all spheres of engineering and construction projects in cities and townships of the federal republic of Nigeria to your reputable organisation.

We are a world class engineering and construction company with a reputation for technical excellence. We work in partnership with sophisticated clients who value the highest levels of quality, safety and technical expertise- applying our skills to meet their individual needs. We are passionate, dynamic, trustworthy and ethical in every job we undertake. We are stewards to our client's resources.

As a professional engineering based company, we specialize in the following areas listed below:

- Road Construction
- Building/ Civil Engineering
- Mechanical Engineering
- Electrical Engineering
- Technical Procurements & Installations
- Pneumatic Procurements & Installations
- Water Engineering (dam, Boreholes, Reticulation, Etc.)
- Agricultural & Turkey Projects



Based on the solid foundation of our history, we are committed to providing quality Projects and services to all our clients. We understand the high demands associated with delivering quality developments on time and within budget.

Over the years **NEW CONCEPT INFRASTRUCTURE WEST AFRICA LIMITED** has grown to a nationally recognised organisation built on a foundation of hard work and dedication.

We pride ourselves in transforming our customer's visions into tangible realities and consequently enhancing their images.

We have in our employ well-qualified and certified professionals in the industry and deploy the best techniques in all our work. Our expertise spans the industry spectrum, from smaller projects to multi-million projects.

We have a strong commitment to excellence and quality.

The company has its operational headquarters in Abuja with liaison and site offices in Lagos and other parts of the nation.

THE COMPANY



Reliability, Openness Creativity Are What Drives Us.

We are a progressive construction company and pride ourselves with Traditional value of services and professionalism.

We contain an in house wealth of construction knowledge and are well Versed in all forms of building methods, from traditional to interesting new Innovations.

Through Hard Work And Dedication, **NEW CONCEPT INFRASTRUCTURE WEST AFRICA LIMITED** Has Envolved Into A Professional Brand Construction Company In Nation Of Nigeria.

NEW CONCEPT INFRASTRUCTURE WEST AFRICA LIMITED consists of some of the leading experts in the construction industry. the company's dedicated and highly-experienced associates are committed to building for the future, with our combination of construction experience, vast resources, surety, and our succesful track record of managing mutiple projects, we are your choice for all your construction needs.

when you add it all up, we make it easier t attain your ultimate goal - to deliver projects quickly, effieciently and cos-effectively. the results are a great product every time.

OUR VISION
AIM, MISSION
AND
CORE VALUES



OUR VISION

To be the foremost provider of construction service by assembling the most experienced and professional construction team.



MISSION STATEMENT

We are committed to building a strong platform for the future.

OUR AIM

To provide an EFFICIENT and TRUSTWORTHY service through our extensive KNOWLEDGE and EXPERIENCE via effective COMMUNICATION, with our client from tender stage to project completion'

OUR PROMISE

"Fidelity" is the Company;s commitment to it,s clients,partners and team members to deliver a quality product and gain overall satisfaction through integrity and hard work, we assure you that we will endeavour to achieve and deliver your project at the time and budget agreed. We guarantee the results

is through this belief that we attribute all of our success and look to build lasting relationships into the future.

We stand behind our work on every project and strive for excellence



OUR CORE VALUES

Safety

Safety is an integral part of our culture at NEW CONCEPT INFRASTRUCTION WEST AFRICA LIMITED. A strong safety program is a major factor in our success, and it contributes to our competitive edge.

Quality

We are committed exceeding our clients expectations by establishing clear roles and responsibilities for quality assurance.

Dynamic

We continually improve our training, tools and process to increase the quality of our service.

Integrity

We consistently do what is in our client's best interest by following our company's values, method and principles, based on mutual trust.



METHODOLOGY

with great exceptional trained personnel in our organization, we present of quality services at quantitative values using our dependable engineering equipment and tools at every level of projects.

And with our state of the facilities, we can renovate/ rehabilitate roads and buildings irrespective of designs. listening to our client's needs we tailor our dexterity at the utmost satisfaction of our clients with our well-structured and functional departments.

OBJECTIVES

our main objective is to stand head above shoulders and be the number one engineering solution provider.

FINACIAL STRENGHT

NEW CONCEPT INFRATRUSTURE WEST AFRICA LIMITED is multi-million assets and capital based company established to operate and serve the general public in national growth and development having fulfilled all necessary constitutional, corporate, legal, financial and natural obligations of the Nigeria nation and has the financial capability to carry out any contract to the satisfaction of our clients.

however, with our strong rewarding mutual relationships with our banks;

Zenith Bank

Guaranty Trust Bank

Providing unquestioned financial backing and capabilities to handle any viable project anywhere any where in Nigeria, presents substantial reasons for the public to reckon with us.



GENERAL INFORMATION

Name Of Firm	NEW CONCEPT INFRASTRUCTION AFRICA LIMITED
Head Office Address	Plot 3123 Onrex, Opposite Maitama District, Abuja, Nigeria.
Principal Place of Business	Abuja
Email	newconcept.infra@gmail.com
Place and Year of Incorporation	Abuja - 2013
NATIONALITY OF OWNER/S	GREEK - LEBANESE



CERTIFICATES



RC 1109015



CORPORATE AFFAIRS COMMISSION
FEDERAL REPUBLIC OF NIGERIA

Certificate of Incorporation


I hereby certify that

NEW CONCEPT INFRASTRUCTURE WEST AFRICA LTD

*is this day incorporated under the COMPANIES AND ALLIED MATTERS
ACT 1990 and that the Company is Limited By Shares.*

*Given under my hand at Abuja this Seventeenth day of April,
2013*




BELLO MAHMUD

Registrar - General

617827



MINISTRY OF INTERIOR

CITIZENSHIP & BUSINESS DEPARTMENT

Block F, Old Federal Secretariat,
PMB 7007 Area 1, Garki, Abuja - Nigeria.

SECINTAL

MIA/ B.35171/I/73

09-2341293


11th November, 2013

The Managing Director,
New Concept Infrastructure West Africa Limited,
8, Ontario Crescent Maitama,
Abuja.

GRANT OF BUSINESS PERMIT

I am directed to refer to your application on the above subject and to inform you that the Honourable Minister has approved the grant of Business Permit to your company.

2. An approved Business Permit Certificate reflecting the composition of Board of Directors is attached herewith.
3. Copies of this letter are being endorsed to the Comptroller-General, Nigeria Immigration Service and the Registrar-General, Corporate Affairs Commission, Abuja for their information and necessary action.
4. Please accept the assurances of the Honourable Minister's high regards.


Adetayo Sode

Director (Citizenship & Business)
For: Honourable Minister



SPECIAL CONTROL UNIT AGAINST MONEY LAUNDERING
(SCUML)



RN: SC

Certificate of Registration

I hereby certify that

NEW CONCEPT INFRASTRUCTURE WEST AFRICA LTD

Has been duly registered in accordance with the provisions of
Section 5 (1) (a) and (4) of the
Money Laundering (Prohibition) Act, 2011.

[Signature]

Director

6th AUGUST 20

Date of Issue: 20

060141



0097034

FEDERAL GOVERNMENT OF NIGERIA

VALUE ADDED TAX ACT CAP VI REVISED EDITION (LAWS OF THE FEDERATION OF NIGERIA) 2004

REGISTRATION CERTIFICATE

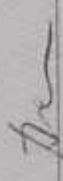
This is to certify that

New Concept Infrastructure West Africa Ltd
is registered with the Federal Inland Revenue Service
pursuant to the above mentioned Tax Law

RC NO: 1109015
TIN NO: 16823019-0001

Date of Issue: JUNE, 2019




Executive Chairman
Federal Inland Revenue Service

FIRS/STAT/034



FINANCIAL REPORTING COUNCIL OF NIGERIA

Federal Ministry of Industry, Trade and Investment

Dear Sir,

NEW CONCEPT INFRASTRUCTURE WEST AFRICA LTD

I refer to the form completed by you seeking registration of the above named company with our Council and herein forward to you the Financial Reporting Council (FRC) Registration number for the company.

FRC/2020/00000013582

Please note that the provisions of the Financial Reporting Council of Nigeria Act No. 6, 2011 should be complied with as they affect your Company.

Yours faithfully,

Executive Secretary/Chief Executive Officer

June 24, 2020

NO 157, ABUJA
KADUNA EXPRESS
WAY, SULEJA

the conscience of regulatory assurance

LCCT Conference and Exhibition Centre, (4th Floor), Plot 10, Nurudeen Olowopopo Drive,
Central Business District, Alausa, P. O. Box 10968, Ikeja, Lagos, Nigeria.
Tel: (234) 01-17001150, 01-17001151, 08175144101. www.financialreportingcouncil.gov.ng

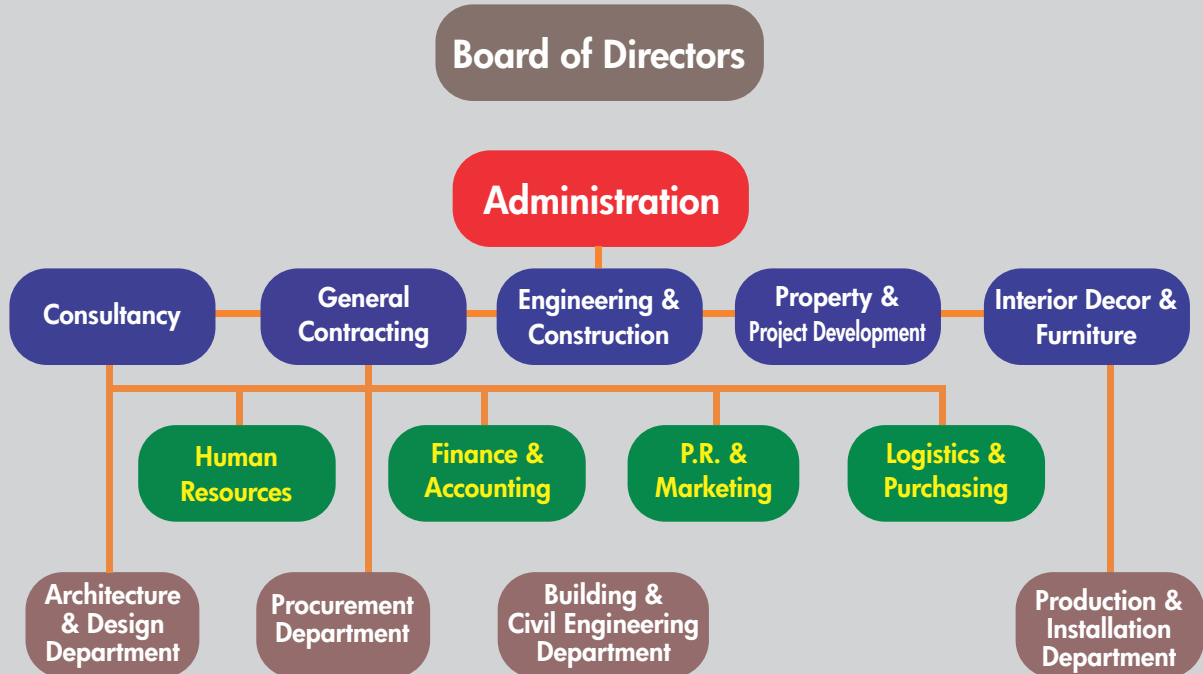


Organizational Structure

"Management in all business and human organization activity is simply the act of getting people together to accomplish desire Management comprises planning, organizing, staffing, leading directing, facilitating controlling or manipulating an organization (a group of one or more people or entries) or effort for the purpose of accomplishing a goal

Our board of directors consist of certified individuals seasoned in the various services which the company provides. They are involved in every aspect of the company's operation and administration in order to maintain the quality of services, proper delegation of department responsibilities and efficient implementation and delivery of our requirements and company's goals.

In lines with our mission statement, we focus on the company's structure to enable us deliver superior service. Every venture, either minor or significant, requires people and proficiency.



Organizational Structure by Departments & Divisions



LOCAL RESOURCE UTILISATION WITH COMMUNITY AND SOCIAL RESPONSIBILITY

LOCAL RESOURCE UTILIZATION IN LINE WITH NIGERIA CONTENT;

1. On award of contract advert will be place for the various posts for which vacancy is available in Nigeria Daily. Interview is to be conducted and successful candidates notified.
2. All material to be incorporated into the road works like, laterite, sharp sand, Petrol, Diesel, Crushed store aggregates Bitumen, Asphalt, Cement, Iron Roads and woodworks shall be purchased locally.

In case of sub-contracting and supplies that may be required, we shall employ the services of the local community.

COMMUNITY AND SOCIAL RESPONSIBILITY;

The company total workforce is one Hundred and Fifty-Seven (123)(though may vary from time to time) this include both skilled and unskilled workers here the percentage benefit to youth employment and community development in Nigeria is 96% and in term of community development we do ad value to youth in the project location or host community such as training and introducing them into profession in the construction and Civil Engineering industry, we also look other aspect of social responsibilities here the company on its own expenses provide earth road to the host community, etc.



DESCRIPTION OF CURRENT HEALTH SAFETY AND ENVIRONMENT (HSE) PROCEDURES, PLAN, MANULS, AND HSE PERFORMANCE STATISTICS OVER THE LAST THREE YEARS

We hereby write to state that we have provided and maintained basic safely standard ad each of our site to ensure that both the host community and workmen are protected in time of accident and clement weather. Find list of such provisions.

1. First aid boxes
2. Helmets Rain Books
3. Safety boots
4. Hand Gloves
5. Fire Extinguisher
6. Protective Goggles
7. Rain Coats
8. Reflective Coat
9. Nose Masks
10. Trained personnel for minor emergencies

We have educated staff on need for safety first and over the period of three years We have not experience any facilities resulting in death. Minor cuts and bruises were handled before transferring to a registered hospital.

LIST OF PERSONNEL & RESOURCES

NAME

HAITHAM MAHFOUZ
MOHAMMED MAHFOUZ
MOHANNAD JIHAD GHRAIZI
BAR. FRIDAY ODOMA
AFEES A. ADEYEYE
ENGR. ABDULRAHMAN IBIS
ENGR. MUSTAFA MOHAMED
SHASSAN YOLA HASAN
ENGR. FRIDAY OFEM
ENGR. AWAL ABUBAKAR
ENGR. TIMOTHY ADOLANG
ABEL AUDU
BASIL JIBRIN
ENGR. WILSON AKONDAYO
YEHYA KANAA
USMAN TANKO
SADIQ ABUBAKAR
PAUL ALADEJUYIGBE
KINGSLEY PAM
GODWIN AGBELA
ZIKRO ABDUL
AIMAN MAHFOUZ
ABDULAHY SADIQ

POSITION

MANAGING DIRECTOR
DIRECTOR
DIRECTOR
LEGAL ADVISOR
ACCOUNTING MANAGER
PM/ROADS
PM/BUILDING
AUDITOR
SITE MANAGER
CIVIL ENGINEER
CIVIL ENGINEER
QUANTITY SURVEYOR
LAND SURVEYOR
SITE ENGINEER
HEAD OF MECHANICS
STORE MANAGER
HEAD OF TRANSPORT
EARTHWORK FOREMAN
LAB TECHNICIAN
SURFACE FORMAN
CONCRETE FORMAN
OPERATION MANAGER
QUANTITY SURVEYOR.



LIST OF EQUIPMENT

S/N	DESCRIPTION	MAKE	MODEL
1	CRUSHING	PLANT PARKER	RT 16 (20T/HRS)
2	BULLDOZER	CATERPILLAR	D8N
3	BULLDOZER	CATERPILLAR	D8K
4	BULLDOZER	CATERPILLAR	D7G
5	BULLDOZER	CATERPILLAR	D6H
6	BULLDOZER	CATERPILLAR	D6H
7	EXCAVATER	CATERPILLAR	330BLN
8	EXCAVATER	CATERPILLAR	325B
9	EXCAVATER	CATERPILLAR	320BS
10	EXCAVATER	CATERPILLAR	320C
11	EXCAVATER	CATERPILLAR	320L
12	GRADER	CATERPILLAR	140G
13	GRADER	CATERPILLAR	14G
14	GRADER	CATERPILLAR	140G
15	GRADER	CATERPILLAR	14H
16	PAD FOOD ROLLER	DYNAPAC	15TCA251
17	PAD FOOD ROLLER	LODIGO	LT214
18	PAVER	APPOLO	AP550
19	PAYLOADER	CATERPILLAR	950E
20	PAYLOADER	LIEBHERR	511
21	PAYLOADER	CATERPILLAR	966G
22	STEEL ROLLER	BENFORD	S/ROLLER
23	TYRE ROLLER	LODIGO	LT214
24	VIBRATING ROLLER	BOMAC	BW213D
25	HIAB	IVECO	12 TON
26	JEEP	TOYOTA	LAND/CR
27	JEEP	TOYOTA	LAND/CR
28	JEEP	TOYOTA	4RUNNER
29	JEEP	NISSAN	PHATFINDER
30	PICK UP	TOYOTA	TUNDRA
31	PICK UP	TOYOTA	TACOMA
32	PICK UP	CHEVROLET	AVALANCHE
33	SERVICE TRUCK	INTERNATIONAL	
34	TANK Mc1	RENAULT	25,000
35	TANK Mc1	RENAULT	15000
36	TIPPER	HOWO	12 TYRE
37	TIPPER	HOWO	12 TYRE
38	TIPPER	HOWO	12 TYRE
39	TIPPER	HOWO	12 TYRE
40	TIPPING TRAILER	MACK	
41	LOWBED'	MAN DIESEL	80 TON
42	LOWBED	IVECO	55 TON
43	WATER TANKER	MERCEDES	10174X2
44	WATER TANKER	MACK	Dm6905
45	WATER TANKER	IVECO	
46	CHIPPING SPREADER		
47	CHIPPING SPREADER		
48	GENERATOR	PERKINS	2490/150
49	GENERATOR	BOBINIDUR	BOB345
50	GENERATOR	CATERPILLAR	320KVA
51	MIXER	HINDUSTAN	EBIXA
52	MIXER	HINDUSTAN	EBIXA
53	WELDING MACHINE	WELDING MACHINE	400 AMPS
54	WELDING MACHINE	WELDING MACHINE	200 AMPS
55	AIR COMPRESSOR	ATLAS	





**Road Network maintenance of Asphaltic Roads
at Sarkin Bawa, Kadua State**

**Rehabilitation of Surfaced Roads of
Kaura L.G.A. Kano**



**Segad Farms
Land Preparation Piga Kano State.**

**Sunti Golden Sugar Est.
Drainages Mokwa Niger State.**

**Idrisima Estate
Road Construction Abuja**

**Kogi State University
Hostel Building Construction Kogi State.**



**Cachez Trunkey Projects
Road Chanel Drainage Abuja**

**Dangote Sugar Farm
Land Preparation Tunga Nasarawa State.**

**Eagle Ford Nig. Ltd.
Land Preparation Abuja.**



**Olam Nigeria Ltd
Farm Road Network Nasarawa State**

**Many NGOs Rural Development, farms private
projects**

E.t.c



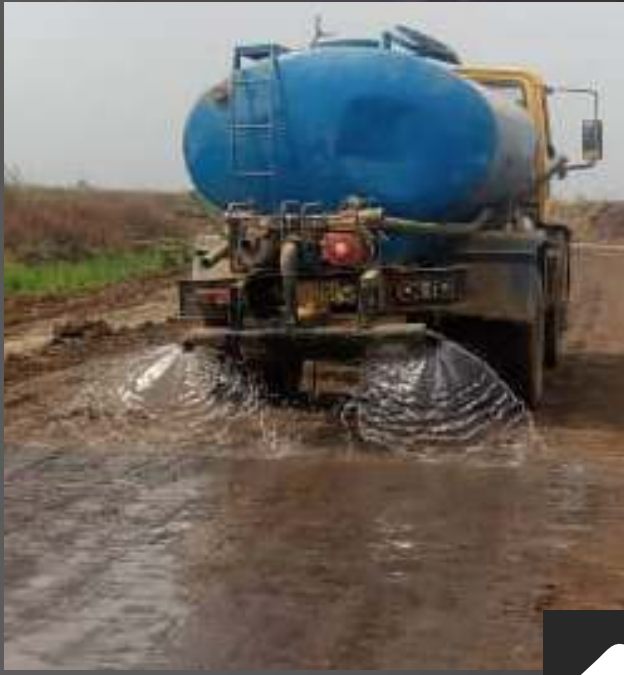




Pictures of Projects Executive





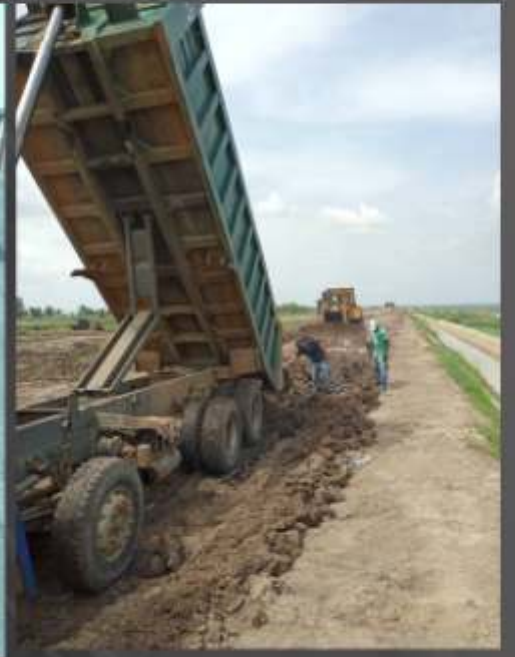












AGRICULTURAL

LAND PREPARATION



Contact Details



**NEW CONCEPT INFRASTRUCTURE
WEST AFRICA LIMITED**

Office:

Plot 136 Section Central A, Cadestral Zone B15,
Opp. MabushiInternational/Modern Market, Abuja

Tel:

+234 (0) 706 1000 055, +234 (0) 817 5444 445
+234 (0) 811 8888 877

Email:

newconcept.infra@gmail.com

